

REVJAMS



Studio TWS

True Wireless Stereo Sport Earbuds

USERS GUIDE

Thank you for choosing the **RevJams Studio True Wireless Bluetooth Stereo Sport Earbuds**.

Please take the time to read this manual carefully, even if you are already familiar with a similar product.

This product is compatible with all Bluetooth enabled devices.

PACKAGE CONTENTS



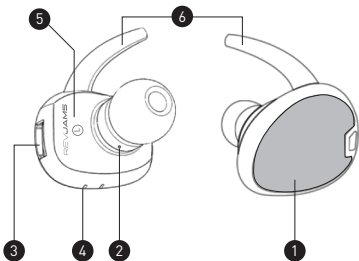
L

R



- RevJams Studio True Wireless Bluetooth Stereo Sport Earbuds (L+R)
- Micro USB Y Charging Cable
- 3 Sets of Ear Bud Tips (S,M,L)
- Users Guide

HEADSET CONTROLS



1. Multi-Function Button

- Power On/ Off
- Pairing
- Call Functionalities- Answer/ End/ Redial/ Reject Call
- Music Functionalities- Play/ Pause/ Track selection

2. Microphone

3. Micro USB Charging Port

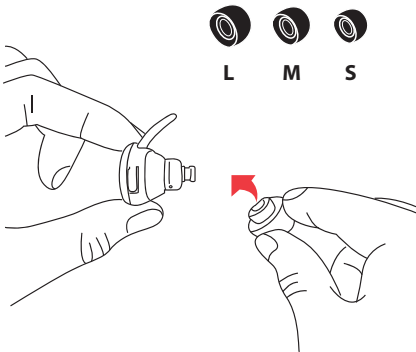
4. LED Indicator

5. Right /Left Indicator

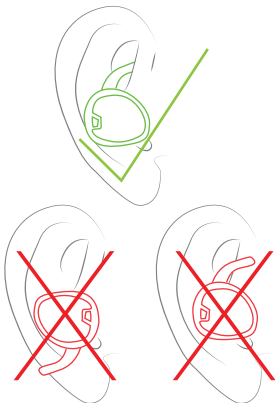
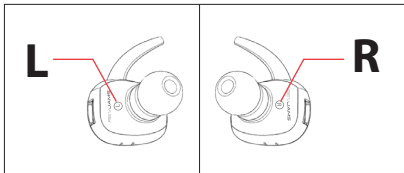
6. Silicone Ear Hooks

CUSTOMIZE FIT

Make sure to attach the correct size earbud tip to earbuds, a proper fit will ensure stability and optimal sound quality.



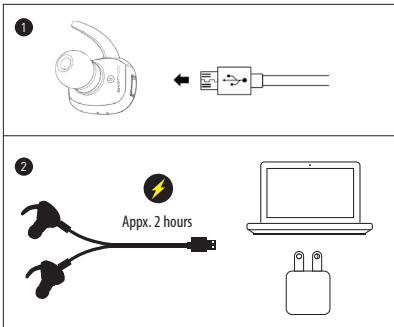
HOW TO WEAR



PAIRING YOUR HEADSET

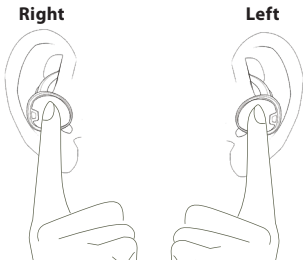
I. Fully charge your Bluetooth earbuds

Initial charging time is approximately **2 hours**.



II. How to pair

Your RevJams Studio Bluetooth Stereo Earbuds are **True Wireless** Earbuds that require that the earbuds be paired to each other **first** and then to your Bluetooth enabled device in order to achieve stereo sound from both earbuds.



STEP 1: Place the earbuds in each ear and press and hold down the multi-function button on both earbuds (L+R) **simultaneously for 10 seconds to PAIR.**

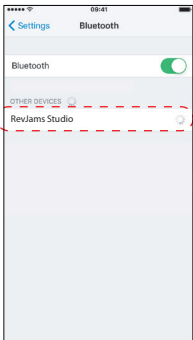
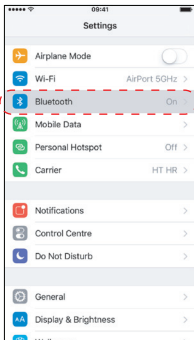
The earbuds will power on after 4-5 seconds, keep pressing for 10 seconds or until you hear short sequential beeps which indicate that the earbuds are now being paired to each other.

Once properly paired, you will hear a voice prompt confirming your connection and then the Left and Right channel connection.

IMPORTANT!

If you do not hear this voice prompt, please power off the headset and repeat Step 1.

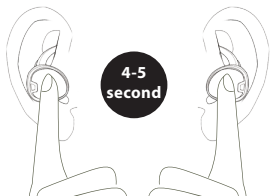
STEP 2: Activate your mobile phone's Bluetooth pairing function and select “**RevJams Studio**” from the list of available Bluetooth devices to connect. Once properly paired to your device, a voice prompt will confirm that pairing is successful.



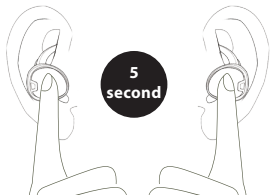
PAIRING ISSUES? CALL OR EMAIL US!
Email: customerservice@revjams.com
Toll free number: 855-206-6634

GENERAL INSTRUCTION FOR USE

TO POWER ON- Press and hold down the Multi-Function button on both earbuds (L+R) simultaneously for **4-5 seconds** to **POWER ON**.



TO POWER OFF- Press and hold down the Multi-Function button on both earbuds (L+R) simultaneously for **5 seconds** to **POWER OFF**.



CALL MODE

Answering a Call	Short Press the <u>Right earbud's</u> Multi-Function button once to accept the call.
Rejecting a Call	Press and hold the <u>Right earbud's</u> Multi-Function button for 2 seconds to reject the incoming call.
Ending a Call	Short Press the Multi-Function button on either earbud to end the call.
Redialing a Call	Press the <u>Right earbud's</u> Multi-Function button for 1 second while the earbuds are on standby mode to redial the last dialed phone number on your mobile phone.

MUSIC MODE

Play/Pause Music	Once connected to your music player, Press the Multi-Function button once to play music. Short Press the Multi-Function button to pause music.
Next Track	Double Press the multi-function button to select the next track.
Volume Control	Volume control needs to be adjusted directly from your mobile device.

TROUBLESHOOTING

Connection issues

- Be sure that your headset is fully charged and powered on.
- Be sure that the headset is paired with your mobile phone.
- Be sure that your mobile phone's Bluetooth feature is activated.

Audio issues

Wireless devices are susceptible to interference that may affect audio quality and result in static.

- Make sure there is a direct line of sight between your headset and phone. Avoid placing objects that can block radio signals, between paired devices.

These include walls, doors, and windows.

- Make sure the distance between your headset and the paired device does not exceed 33 feet (10m).
- Keep your headset and mobile phone on the same side of your body.

Note: Low battery capacity in your earbuds and mobile phone may affect the Bluetooth range.

Bluetooth Connection issues

If you are experiencing Bluetooth connection issues - Keep the music device at or above waist level on your right side, the same side as the headphones antenna.

**Customer Service/
Technical Assistance
Call or Email Us!**

Email:

customerservice@revjams.com

Toll free number: 855-206-6634

WARRANTY

At RevJams, we are dedicated to making the best quality product. To back this up, your RevJams Studio True Wireless Bluetooth Stereo Earbuds are warranted for One (1) full year from the date of purchase.

Please visit our website **www.revjams.com** for more details.

**For Customer Service / Technical Assistance
Call or Email Us!**

Email: customerservice@revjams.com

Toll free number: 855-206-6634

SAFETY INFORMATION

- Check local laws regarding the use of mobile phones and headsets while driving.
- If you use the headset while driving, ensure that your attention and focus remains on the road and you drive in a responsible and safe manner.
- Never allow children to play with the headset, as the small parts may be a choking hazard.
- Observe all signs that require an electrical device or RF radio product to be switched off in designated areas. These could include hospitals, airplanes, blasting areas, and potentially explosive environments.
- Never mount or store your headset over an air bag deployment area, a serious injury may result when the air bag deploys.
- Do not open or mutilate the built-in battery.
- Dispose of batteries according to local regulations. Do not dispose as household waste.

CARE AND MAINTENANCE OF YOUR HEADSET

- i. Consider turning your headset off before placing it in your pocket or bag. If the Power button is accidentally activated, your mobile phone may place an unintended call.
- ii. Do not expose the headset to liquid, moisture or humidity, as it is not waterproof.
- iii. Do not use abrasive cleaning solvents to clean the headset.
- iv. Do not expose the headset to extreme temperatures. The best storage temperature range is from 40-80 F, otherwise, the life of the headset will be affected.
- v. Do not dispose of the headset in fire as it this may result in an explosion.
- vi. Do not bring your headset into contact with sharp objects as this will cause scratches and can damage the headset.
- vii. Do not attempt to disassemble the headset, as it does not contain serviceable components.
- viii. If you do not use the headset for long periods, be sure to store it in a dry place, free from extreme temperature conditions and dust.

PRODUCT SPECIFICATIONS

Model No. REV-TW600

Product Size: 0.98 X 1.18 X 1.10 inches

Product Weight (bare): 0.4 oz. X 2

Charging Time - Less than 2 hours

Bluetooth Version: Bluetooth 4.1

Wireless Range: 33 feet

Input voltage: Micro USB DC 5V

Battery:

DC Battery power: 55mAh Built-in rechargeable lithium battery

Battery life: Up to 3 hours of Talk/Music Time

Standby Mode: Up to 60 hours

Actual performance may vary due to the user's habits, different modes of operation, and mobile phone settings. This manual is for reference purposes only. The specifications and design of the headset may change without prior notice. Actual product may differ slightly from the image on the packaging.

WARNING AND PRECAUTIONS

WARNING: To prevent fire or shock hazard, do not expose this unit to rain or moisture.

WARNING: Do not place this unit directly onto furniture surfaces with any type of soft, porous, or sensitive finish. As with any rubber compound made with oils, the feet could cause marks or staining where the feet reside. We recommend using a protective barrier such as cloth or a piece of a glass between the unit and the surface to reduce the risk of damage and/or staining.

WARNING: Lithium batteries, like all rechargeable batteries are recyclable and should be recycled or disposed of in normal household waste. Contact your local government for disposal or recycling practices in your area. They should be incinerated since they might explode.

NOTE: This device uses an internal rechargeable lithium-ion battery that should last the lifetime of the device. If you suspect your battery may be dead after several attempts to charge, please visit **www.revjams.com** for support.

Never disassemble the unit or attempt to remove the battery as that could cause leakage of an electrolyte substance

FCC WARNINGS

Warning: Changes or modifications to this unit not expressly approved by the party responsible for compliance could void the user's authority to operate the equipment.

NOTE: This equipment has been tested and found to comply with the limits for a Class B digital device, pursuant to Part 15 of the FCC rules. These limits are designed to provide reasonable protections against harmful interference in a residential installation. This equipment generates, uses, and can radiate radio frequency and, if not installed and used in accordance with the instructions, may cause harmful interference to radio communications.