

# REVJAMS

REV-BTS600



## Vibe **mini**

Bluetooth Portable Speaker

*Vibe Mini Altavoz portátil Bluetooth*

**USERS MANUAL**

Thank you for choosing the RevJams Vibe Mini Bluetooth Speaker!

Please take the time to read this manual carefully, even if you are already familiar with a similar product.

## PACKAGE CONTENTS

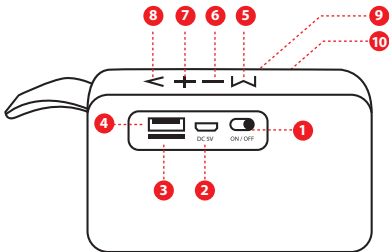
1x RevJams Vibe Mini Bluetooth Speaker

1x 2 in 1 Micro USB Cable and 3.5mm AUX Audio Cable

1x User Manual



## SPEAKER CONTROLS



1. Power ON/OFF switch
2. 2 in 1 Micro USB Cable and 3.5mm AUX Audio Cable port (can be used to play music)
3. Micro SD Card Slot
4. USB port
5. "M" Mode button- Bluetooth Mode, AUX Input Mode, FM Radio Mode
6. "-" Volume Decrease / Previous Track
7. "+" Volume increase/ Next Track
8. ">" Play/Pause/Answer Call
9. Microphone
10. LED status indicator

## **GETTING STARTED**

To use your RevJams Vibe Mini Bluetooth Speaker, please follow these steps:

1. Fully charge the battery of your RevJams Bluetooth Speaker.
2. Pair your Bluetooth Speaker to a Bluetooth-enabled device prior to use.

## **CHARGING YOUR BLUETOOTH SPEAKER**

Your RevJams Vibe Mini Bluetooth Speaker comes with a built-in rechargeable battery and a Micro USB charging cable. Charge fully before use. The battery indicator will turn red when charging and turn off once charging is complete. Initial charging time is approximately 3-4 hours.

## **POWERING ON/OFF**

Toggle the Power Button switch to the ON position (left side) to Power ON, a Blue LED light will turn on. Toggle the Power button switch to the OFF position (right side) to Power OFF.

## **PAIRING YOUR BLUETOOTH SPEAKER**

In order to use your RevJams Vibe Mini Bluetooth Speaker with a Bluetooth-enabled device, you will first need to pair the two.

1. Begin with the Bluetooth Speaker being fully charged.
2. Place the Bluetooth Speaker and the Bluetooth enabled device where they are easily viewable and no more than 3ft. apart.
3. Toggle the power button switch to the "ON" position to power ON. The speaker will automatically enter Bluetooth Pairing mode once powered on and a voice prompt will announce "Bluetooth Device is ready to Pair". If it does not enter pairing mode automatically, short press the Mode button to enter the Bluetooth Mode.
4. Activate your mobile phone's Bluetooth pairing function and select "Vibe Mini" from the list of devices shown. A voice prompt will confirm once pairing is successful "Bluetooth Device is connected successfully".

## **RANGE**

Be sure to keep the speaker within 30 feet (10 meters) of the connected media device at all times for optimal performance.

## MODE FUNCTIONS

The Bluetooth speaker is equipped with a Mode button that allows you to switch in between modes – Short Press the “M” Mode button to switch between modes.

## MODES SEQUENCE:

Bluetooth Mode ➔ Radio Mode ➔ AUX Input Mode.

## AUX INPUT MODE

This speaker includes a 2 in 1 AUX Audio/Micro USB cable, plug the USB end of the cable into the USB port of the speaker and connect the 3.5mm AUX end to the audio port of your non-Bluetooth device, then short press the Mode button to enter “AUX Input” audio mode.

## RADIO MODE

In order for the Radio Mode to work, a micro USB cable must be connected to the micro USB port of the Bluetooth Speaker during use. Short Press the “M” Mode button to switch to the Radio Mode. Once Radio mode is selected, short press the “>” to scan available FM radio stations (please allow 1-2 minutes for the initial scan to be completed, the scan is complete once it remains on one radio station), and then use the “+” and “-” to scroll through the available FM radio stations.

## LED INDICATOR GUIDE

<b>STATUS</b>	<b>INDICATOR</b>
Power On	Blue light
Charging	Red light
Charging complete	Red light turns off
Bluetooth Pairing Mode	Blue light flashes for Pairing



## CALL MODE

Answering a Call	Short Press the ">" button once to accept the call, or answer the call normally via your mobile phone.
Ending a Call	While on the call, Short Press the ">" button to end the call or end the call directly from your mobile phone.
Redialing a Call	Press the ">" button twice to redial the last dialed phone number on your mobile phone.

## MUSIC MODE

Adjusting the Volume	Press and Hold the "+" button to increase volume or "-" button to decrease volume. You can also adjust the volume on your handset or device.
Play/Pause Music	Once connected, Press the ">" button once to Play music. Short Press the ">" button to Pause music.
Previous Track	Short Press the "+" key to select the Previous track.
Next Track	Short Press the "-" key to select the Next track.
Disconnect Bluetooth Connection	Press the Mode button "M" to switch between modes.

## **SPECIFICATIONS**

SKU: REV-BTS600

Material: ABS + Fabric cover surface

Output power: 4Ω 3W\*1

Input power: DC5V/500mA

Battery Li-ion : DC 5V 300MAH

Charging time: Up to 3 hours

Play time: 2 hours

Frequency Response: 100HZ-20KHZ

Unit weight: 5.9 oz

Unit size: 4.5X2.75X1.4 inches

Function: Bluetooth/FM radio/Micro SD/USB/

Handsfree/AUXA59

Bluetooth version: 4.2

*Actual performance may vary due to the user's habits, different modes of operation, and mobile phone settings. This manual is for reference purposes only. The specifications and design of the headset may change without prior notice. Actual product may differ slightly from the image on the packaging.*

## **CARE AND MAINTENANCE**

1. Please charge your new speaker for at least 3 hours before first use.
2. To prevent damage and risk of electrical shock, do not expose this device to dust, vibration, rain, water or liquids of any kind.
3. Do not place device in close proximity to open flames or extreme heat sources.
4. Always place your device on level, flat and stable surfaces.
5. Avoid placing items on top of the speaker.
6. Do not use excessive force when pressing buttons or handling your speaker.
7. To clean your speaker, use only a dry, soft cloth or minimally damp cloth without any corrosive solvent or cleaning agent

## **SAFETY**

To prevent fires, shock or injury, please do not disassemble or replace any parts of this device. In the event that your device may be damaged or in need of repair, please contact a professional maintenance or qualified service center for assistance. We are not responsible for any personal injury or property damage caused by improper use of this product. Please do not allow the use of this device by small children without proper adult supervision.

## **FCC COMPLIANT**

This device complies with part 15 of the FCC Rules. Operation is subject to the following two conditions:

(1) This device may not cause harmful interference, and (2) This device must accept any interference received, including interference that may cause undesired operation.

## WARRANTY

At RevJams, we are dedicated to making the best quality product. To back this up, your RevJams product warranted for One (1) full year from the date of purchase.

Please visit our support page at **[www.revjams.com/support](http://www.revjams.com/support)** for helpful tips such as user's guide, instructional videos and more!

For Customer Service / Technical Assistance  
Call or Email Us!

**Email: [customerservice@revjams.com](mailto:customerservice@revjams.com)**

**Toll free number: 855-206-6634**



